



"Your Industrial Partner"



GRAND METAL CORPORATION

An ISO 9001: 2015 Certified Company



Quality Policy



1. To strive for customer satisfaction by service and technological Integration.	5. Create a sense of responsibility amongst all members of the organization.
2. All departments are fully atomized for better supply chain management to offer best product quality & prompt service to customers.	6. To maintain a competent work force through training and continual improvement of Quality and Safety Management Skills.
3. To Train, Motivate and Encourage Employees in achieving Company's Goals.	7. To manage operations and optimize profits.
4. All our products passes through best of quality systems for material control, process control, testing, finishing and marking.	8. Continually improve our Quality Management System to ensure its continuing suitability to enable us to stay ahead of competition.

Third Party Inspection

We also accept third party inspection by reputed agencies like :

 DET NORSKE VERITAS	 BUREAU VERITAS	 ABS Consulting <i>A convergence of excellence</i>	 Lloyd's Register	 TUV SUD
 PDIL	 Germanischer Lloyd	 BAXCOUNSEL	 BUREAU VERITAS	 Dept. of Atomic Energy
 I.A.I.	 I.B.R.	 I.B.R.	 Electromech Engg.	 SGS WHEN YOU NEED TO BE SURE
 GLC Certified ISO 9001	 Nuclear Power Corp. of India Ltd.	 TATA Project	 H.G.	 CEI QUALITY & SAFETY ENGINEERING



GRAND METAL CORPORATION

Company Profile

Grand Metal Corporation is a force to reckon with in the field of Importing and exporting of all Ferrous & Non-ferrous metals/products, premium quality Sheets & Plates, Pipes & Tubes, Flanges & Pipe Fittings, Bars & Shafts in Stainless Steel, Carbon Steel, Alloy Steel, Nickel Alloy, Special Alloy and Low Temperature Services.

Apart from this we have inhouse manufacturing facility of Fasteners & Pipe Fittings in Gujarat.

We are based in Mumbai (India), the company has scaled incredible heights in business owing to its innovative products. The company's productivity and clients base is always on an upward swing. We believe that commercial success and corporate responsibility should go hand-in-hand. We must therefore recognise and manage the impact of our business and its contribution to society. Responsible behaviour is not just the ethical way to act.



Customer Service

Keeping efficient and friendly customer service as the top concern, provides ultimate flexibility in fulfilling each & every customer requirement irrespective of the size of order. Most of our clients are doing business with us since years, which indicates higher levels of customer satisfaction. We always welcome any queries or suggestions from our clients to improve the services and hence to serve them better

Complete Customer Satisfaction



Why Us

Some of our specialities that make us a profitable business partner for our clients are :

- Superior quality products
- Timely delivery
- Proven execution of small as well as large batch orders
- A design solution to design problem
- Customer focused approach

FLANGES

Grand Metal Corporation manufactures superior quality Flanges and offer those at industry leading price. Our professionals develop these flanges by the use of finest quality raw material and cutting edge technology. These are a specific kind of holding devices used to hold pipe, steam cylinder & other multiple purpose. Offered flanges are widely demanded by our clients for their user friendly features like easy installation, corrosion resistance and durability.

FLANGES DETAILS

Materials Grades Available:

Stainless Steel: ASTM A182 F304/304L/304H/316/316L/317/317L/321/310/347/904L etc.

Carbon Steel: ASTM A105/A694F42/46/52/56/60/65/70/A350 LF3/A350 LF2, etc.

Alloy Steel: ASTM A182 F1/F5/F9/F11/F22/F91 etc.

Others: Monel, Nickel, Inconel, Hastelloy, Copper, Brass, Bronze, Titanium, Tantalum, Bismuth, Aluminium, High Speed Steel, Zinc, Lead, etc.

Types: Our range of include PN, Plate Blank Flanges, Screwed Bars, Spectacle, Blind, Lapped, Reducing, Welded, Socketweld, SORF, Threaded, Weldneck, Slipon, Blind, Socket Weld, Lap Joint, Spectacles, Ring Joint, Oriface, Long Weldneck, Deck Flange, RTJ Flange

Size: 1/2" NB TO 40" NB.

Class: 150#, 300#, 400#, 600#, 900#, 1500# & 2500#.

Product Range :

Nickel Alloys	: 201/200
Monel Alloy	: 400/K-500
Inconel	: 600, 601, 625, 825, 800 / 800H / 800HT
Hastelloy	: C22, C276, B-2000
Titanium	: Gr. 1, 2, 5, 7
Duplex & Super Duplex	: UNS-S 31803, UNS-S 32760, UNS-32750, Tantalum, SMO 254, Alloy - 904L, Alloy 20, Alloy 330, etc.
Types	: Weldneck, Slipon, Blind, Socket Weld, Lap Joint, Spectacles, Ring Joint, Oriface, Long Weldneck, Deck Flange, etc.
Size	: 1/2" NB TO 40" NB.
Class	: 150#, 300#, 400#, 600#, 900#, 1500# & 2500#.



FASTENERS



We at **Grand Metal Corporation** manufactures a wide range of Ferrous and non ferrous metal hex bolt, nut, washer, Allen cap bolt, Allen CSK, Self tapping screw, etc. The use of advanced engineering techniques and modern machining facilities allows us to bring in our bolts with better precision, durability and finish. We also offer customization of products in various sizes and dimensions.

FASTENERS DETAILS

THREAD ROD

THREADED ROD - METRIC SERIES	M3 TO M56
THREADED ROD - INCH SERIES	3/16" TO 2"

MACHINE SCREWS

CHEESE HEAD SLOTTED - METRIC SERIES	M1.6 TO M12
CHEESE HEAD SLOTTED - INCH SERIES	1/8" X 1/2"
ROUND HEAD SLOTTED - METRIC SERIES	M1.6 TO M12
ROUND HEAD SLOTTED - INCH SERIES	1/8" X 1/2"
COUNTERSUNK HEAD SLOTTED - METRIC SERIES	M1.6 TO M12
COUNTERSUNK HEAD SLOTTED - INCH SERIES	1/8" X 1/2"
PAN HEAD SLOTTED - METRIC SERIES	M1.6 TO M12
PAN HEAD SLOTTED - INCH SERIES	1/8" X 1/2"
PAN HEAD PHILLIPS - METRIC SERIES	M1.6 TO M10
PAN HEAD PHILLIPS - INCH SERIES	1/8" X 1/2"



Product Range :

HEXAGONAL HEAD SCREWS - METRIC SERIES	M3 TO M56
HEXAGONAL HEAD SCREWS - INCH SERIES	3/16" TO 2"
HEXAGONAL HEAD BOLTS - METRIC SERIES	M3 TO M56
HEXAGONAL HEAD BOLTS - INCH SERIES	3/16" TO 2"
SOCKET HEAD CAP SCREW - METRIC SERIES	M3 TO M24
SOCKET HEAD CAP SCREW - INCH SERIES	3/16" TO 1"
COUNTERSUNK HEAD CAP SCREW - METRIC SERIES	M3 TOM20
COUNTER HEAD CAP SCREW - INCH SERIES	3/16" TO 3/4"
BUTTON HEAD CAP SCREW - METRIC SERIES	M3 TO M20
BUTTON HEAD CAP SCREW - INCH SERIES	3/1" TO 3/4"
SOCKET SET SCREW - METRIC SERIES	M3 TO M20
SOCKET SET SCREW - INCH SERIES	3/16" TO 3/4"
MUSHROOM HEAD SQUARE NECK BOLT - METRIC SERIES	M3 TO M24
MUSHROOM HEAD SQUARE NECK BOLT - INCH SERIES	3/16" TO 1"

We also manufacture Anti-theft Nut, Nylock Nut, Slotted Nut, Flange Nut, Flat Washer, Spring Washer, Serrated Washer, Square Washer Etc. in all sizes and grades.



PIPES & TUBES

We have in store for our clients a sturdy range of stainless steel, brass, copper, nickel alloys, duplex etc. pipes that are capacitated to withstand temperature variations and thus are used in heat transfer process equipment like boilers, super heaters, heat exchangers, condensers and similar applications. These stainless steel pipes can be customized depending upon their industrial usage and hold the following technical details:

PIPES

Stainless Steel & Duplex Steel Pipe

Size	: ½" to 30"
Schedule	: Sch. 5 to Sch. XXS
Stainless Steel	: ASTM A312, A358 - TP 304/304H/304L/316/316H/ 316L/316Ti/309/310/317/317L/321/347/904L
Duplex Steel	: ASTM A790 - UNS S31803, S32750, S32760, S32205

Alloy Steel, Carbon Steel & LTCS Pipe

Size	: 1/2" to 36"
Schedule	: Sch. 5 to Sch. XXS
Alloy Steel Pipe	: ASTM A335 Gr. P5, P9, P11, P12, P22 & P91
Carbon Steel	: ASTM A 106 Gr. B ASTM A53
Low Temp. Pipe	: ASTM A 333 Gr. 6
Line Pipe	: API 5L, X 42, 46, 52, 56, 60, 70
Mild Steel &	: IS 1239, IS 3589
Galvanized Pipe	

Copper & Nickel Alloys pipe

Size	: ½" NB to 10" NB
Standard	: 10S/40S/80S
Copper Nickel	: C70600 (90:10), C71500 (70:30), C71640
Nickel	: UNS N02200, N02201
Monel	: UNS N04400, N05500, Alloy 20
Inconel	: UNS N06600, N06601, N06625, N08800, N08810, N08825
Hastelloy	: UNS N10276, N06022, N10665, N06455

Titanium pipe

Titanium	: Gr. 1, 2, 5, 7
----------	------------------

Types

Round	Rectangle	Square	Hydraulic
-------	-----------	--------	-----------

PRODUCT RANGE :

Size	: 6 mm OD to 355.60 mm OD
Thickness	: 0.6mm-10mm-Gauge : 22 SWG/BWG to 10 SWG/BWG
Form	: Round, Square, Rectangle, Coil, 'U' Shape
Length	: Standard Length & Cut Length
Stainless Steel Tube	: ASTM A-213, A-249, A269-TP 304/304H/304L, 316/316H/316L/316Ti, TP 309, 310, 317L, 321, 347, 904 L etc.
Low Alloy Steel Tube	: ASTM A 213 - T-11, T-12, T-22, T-5, T-9 etc.
Carbon Steel Tube	: BS 3059 Gr. 360 / 440, SA 179, SA / ASTM A210 Gr. A1
Copper Nickel Tube	: ASTM B111, C70600 (90:10), C71500 (70:30), C71640
Admiralty Brass Tube	: ASTM B 111 C44300, C44400, C44500, C68700
Copper & Brass Tube	: ASTM B 188 C11000, C12200, C26000, C27000, C28000
Nickel Alloy Tube	: Nickel, Monel, Inconel, Alloy 20 etc.
Specialize	: Capillary Tube, IBR Tubes, Copper Nickel Tube



FITTINGS

Combining outstanding quality and value, **Grand Metal Corporation** is offering a comprehensive range of Butt weld fittings, Socket weld Fittings, and branch connection fittings. Our reputed engineering process precisely-engineer these fittings in complete compliance with the international quality standards. Further, to fulfill the ever changing demands of our clients, we are offering these fittings in various sizes, designs, grades and other specification. Offered fittings are highly known for their durability and dimensional accuracy.

BUTT WELD FITTINGS

Stainless Steel: ASTM A403 WP 304 / 304L / 304H / 316 / 316L / 317 / 317L / 321 / 310 / 347 / 904L etc.

Carbon Steel: ASTM A234 WPB / A420 WPL3 / A420 WPL6 / MSS-SP-75 WPHY 42 / 46 / 52 / 56 / 60 / 65 / 70

Alloy Steel: ASTM A234 WP1 / WP5 / WP9 / WP11 / WP22 / WP91 etc.

Others: Monel, Nickel, Inconel, Hastelloy, Copper, Brass, Bronze, Titanium, Tantalum, Bismuth, Aluminium, High Speed Steel, Zinc, Lead etc.

Types: Elbow, Tee, Reducer, Return Bends, Stub-Ends, Cap, Collar, Cross, Insert etc.

Size: 1/4" NB TO 32" NB (Seamless & Welded)

Wall Thickness: Sch. 5S To Sch. XXS.



SCREWED & FORGED FITTINGS

Stainless Steel: ASTM A182 F304 / 304L / 304H / 316 / 316L / 317 / 321 / 310 / 347 / 904 Letc.

Carbon Steel: ASTM A105 / A694 F42 / 46 / 52 / 56 / 60 / 65 / 70 / A350 LF3 / A350 LF2.

Alloy Steel: ASTM A182 F1 / F5 / F9 / F11 / F22 / F91 etc.

Others: Monel, Nickel, Inconel, Hastelloy, Copper, Brass, Bronze, Titanium, Tantalum, Bismuth, Aluminium, High Speed Steel, Zinc, Lead etc.

Types: Elbow, Tee, Union, Cross, Coupling, Cap, Bushing, Plug, Swage Nipple, Welding Boss, Hexagon Nipple, Barrel Nipple, Welding Nipple, Parallel Nipple, Street Elbow, Hexagon Nut, Hose, Nipple, Bend, Adapter, Insert, Weldolet, Elbowlet, Sockolet, Thredolet, Nipolet, Letrolet etc.

Size: 1/4" NB TO 4" NB (Socketweld & Threaded)

Class: 3000#, 6000#, 9000#



BRANCH CONNECTION

Stainless Steel & Duplex Steel Outlets

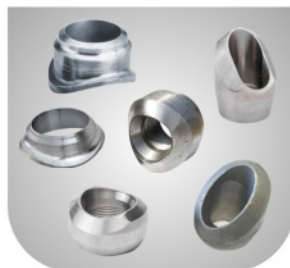
Size	: 1/2"NB to 24"NB in Various Schedule
Class	: 3000LBS, 6000LBS
Stainless Steel	: ASTM A 182F - 304/304H/304L/316/316H 316/316Ti, 309, 310, 317L, 321, 347, 904L
Duplex Steel	: ASTM A 182 - F51, F53, F55

Alloy Steel, Carbon Steel & LTCS Outlets

Size	: 1/2"NB to 4"NB in various Schedule
Schedule	: 3000 LBS, 6000 LBS
Alloy Steel	: ASTM A 182 - F5, F9, F11, F21, F22 & F91
Carbon Steel	: ASTM A 105
Low Temp. CS	: A 350 LF2

Type

Weldolet
Sockolet
Elbolet
Thredolet
Nipolet
Latrolet
Sweepolet





ROUND BAR

ANGLE / CHANNEL

WELDING FILLER WIRE

ROUND BAR

Grades

Stainless Steel : 304/304L, 316/316L/316Ti, 321, 310/310S, 317/317L, 347, 17-4Ph, 15-5Ph, 904L, 410, 420, 430, 431, 430F, 416, 440C etc.
Copper, Brass, Aluminium, Hastelloy, Titanium, Monel, Inconel, Nickel, etc.
Duplex Steel : UNS 31803, UNS32205, UNS 32750, UNS 32760
Alloy Steel : F5, F9, F11, F22, F91.
Carbon Steel, Mild Steel, (EN Series)
Specification : ASTM, AISI, ASME, DIN, UNS etc.

Specification

Condition : Rolled, Forged, Annealed, Picked, Hot Rolled, Cold Roll

Size

Bright Bars : From 5mm Dia upto 350mm Dia
Black Bars : From 16mm Dia upto 350mm Dia
Square Bars : From 5mm Dia upto 250mm Dia
Hex Bars : From 5mm Dia upto 150mm Dia
Wires : 0.1mm Dia to 5mm Dia
Welding Electrodes : 2.6mm to 4mm Dia



Size

Sizes of Angles :

- 20mm to 150mm, in Thk = 3mm to 12mm

Sizes of Channels :

- 20mm to 500mm, in Thk = 3mm to 50mm

ANGLE / CHANNEL

Grades

Stainless Steel : 304/304L, 316/316L/316Ti, 321, 310/310S, 317/317L, 347, 17-4Ph, 15-5Ph, 904L, 410, 420, 430, 431, 430F, 416, 440C etc.
Copper, Brass, Aluminium, Hastelloy, Titanium, Monel, Inconel, Nickel, etc.
Duplex Steel : UNS 31803, UNS32205, UNS 32750, UNS 32760
Alloy Steel : F5, F9, F11, F22, F91.
Carbon Steel, Mild Steel, (EN Series)
Specification : ASTM, AISI, ASME, DIN, UNS etc.

WELDING FILLER WIRE

Nickel Alloys : 201/200
Monel Alloy : 400/K-500
Inconel : 600, 601, 625, 825, 800 /800H /800HT
Hastelloy : C22, C276, B-2000
Titanium : Gr.1, 2, 5, 7, Tantalum SMO 254,
Alloy - 904L, Alloy 20, Alloy 330, etc.
Size : 0.5mm to 5mm



KANTHAL & NICHROME



Kanthal & Nichrome - Resistance Wire and Strips **Grand Metal Corporation** one of the leading suppliers and exporters of high grade Resistance Wires. Available at standard market prices, these products are widely used for furnaces & allied industries. These Resistance Wires are timely delivered at customers' end, owing to vast distribution network. Offered Resistance Wires are widely used in furnaces and allied industries.

KANTHAL & NICHROME

Specifications :

Nichrome Grades: Nichrome 40, Nichrome 60,
Nichrome 70, Nichrome 80

Kanthal Grades: Kanthal A1, Kanthal AF, Kanthal APM, Kanthal D

Nikrothal Grades: Nikrothal 80, Nikrothal 60, Nikrothal 40

Chrome Grades: Chromel A, Chromel C, Chromel D

Round Wire :

Size : 0.010mm - 12mm

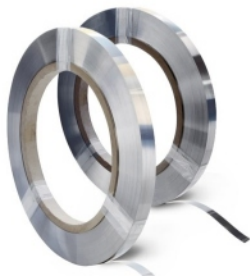
Other Sizes are available on Request

Ribbon / Flat Wire / Strips

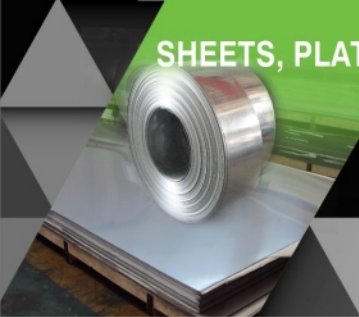
Thickness : 0.023mm - 8mm

Width : 0.038 - 200mm

Other Sizes are available on Request



SHEETS, PLATES & COILS



We are well known for quality supplier of Stainless steel and Aluminium sheets and plates. We always aim to provide high quality sheets & Plates at most competitive price, high on quality and durability. These sheets and plates are available in different dimensions and material to ensure wider choice to our clients.

SHEETS/PLATES & COILS DETAILS

S. S. Sheets & Plates as per ASTM A240, Gr. TP 304,304L, 304LN, 309, 309S, 309H, 310S, 310, 316, 316L, 316H, 316LN, 316Ti, 317, 317L, 321, 321H, 347, 348, 3487H, 409, 410, 420, 430 etc.

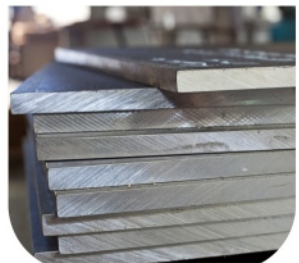
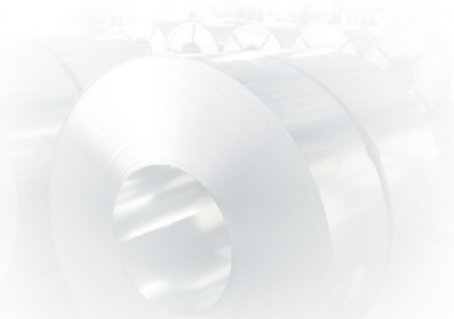
Alloy Steel Plates : as per ASTM A387 Gr. 2, 5, 9, 11, 12 & 22 in class 1 & 2 ASTM A 204 Gr. A & B, DIN 17175 Gr. 15Mo3 & 16Mo3 with IBR Test Certificate.

Carbon Steel / Boiler Quality Plates : as per IS 2062/ASTM A36, Gr. A, B & C, IS 2002 Gr. 1 & 2 ASTM A 516 Gr. 60 & 70, ASTM A 515 Gr.70

Range: 0.5 mm To 200 mm thick in 1000 mm TO 2500 mm width & 2500 mm to 12500 mm length available with NACE MR 01-75

Product Range :

Nickel Alloys	: 201/200
Monel Alloy	: 400/K-500
Inconel	: 600, 601, 625, 825, 800 /800H /800HT
Hastelloy	: C22, C276, B-2000
Aluminium Alloy	: 1100, 2014, 2024, 3003, 5052, 5083, 6061, 6063, 6082, 7075, 8011, etc.
Duplex & Super Duplex	: UNS-S 31803, UNS-S 32760, UNS-32750
Titanium	: Gr. 1, 2, 5, 7 Tantalum, SMO 254, Alloy - 904L, Alloy 20, Alloy 330, etc.
Types	: Sheet, Plate, Coil
Thickness	: 1mm - 200mm

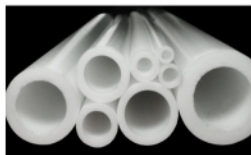


INDUSTRIAL PLASTICS

Grand Metal Corporation has carved a niche in the market as a prominent Trader and Supplier of a vast range of products in Industrial Plastics. We have been meeting the demands of varied sectors by providing hard-wearing and robust range of Polyurethane Rod, Acrylic Sheet, Hylam Rod, Acrylic Sheets, PTFE Rods, Pipes and Tubes, etc. Our products are developed from the high quality raw material, sourced from the key vendors of the market. We have been developing the collection in different specifications according to the needs of the clients.

OUR PRODUCT

Teflon / PTFE Sheets Rods, Pipes and Tubes	Nylon Rod	Nylon Sheet
Polyurethane Rod	Polyurethane Sheet	Acrylic Rod
Acrylic Sheet	Fabric Rod	Fabric Sheet
Hylam Rod	Hylam Sheet	Acrylic Pipe
UHMW Rod	UHMW Sheet	Polycarbonate Sheet
Syndhanio Sheet	HIPS Sheet	ABS Sheet
PP Rod	PP Sheet	PVC Rod
Acrylic Sheets, Rods, Pipes and Tubes	PVC Profiles	Bakelite Rods, Sheets and Profiles
PVDF (Engineering Thermoplastic)	Delrin Rod	Delrin Sheet



Teflon / PTFE Pipes and Tubes



Teflon / PTFE Sheets



Nylon Sheet



Nylon Rod





GRAND METAL CORPORATION

Exporters, Stockist & Suppliers of : Ferrous & Non Ferrous Metal.

Shop No. 8, 13, Jai Siddhi Vinayak CHS Ltd., Ardeshir Dady Cross Street, C. P. Tank, Mumbai - 400 004.

- Tel. : +91 22 6743 6596 / 6639 3699 • Fax : +91 22 2385 1191
- Email : grandmetalcorporation@gmail.com • Website : www.grandmetalcorporation.com

Contact Person

Akash Doshi

Mobile : 📞 +91 97690 58811

Ashish Doshi

Mobile : 📞 +91 98927 02393